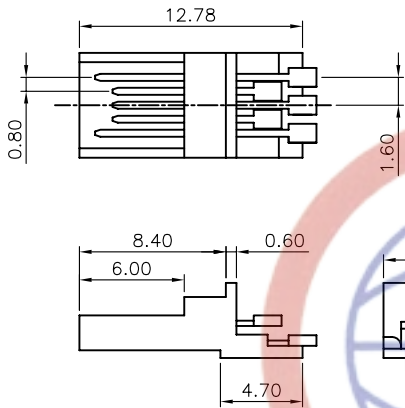
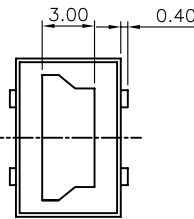
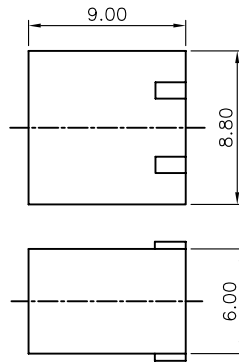


REV.	DESCRIPTION	DRAWN	CHECKED	APPROVED
A	NEW RELEASE	LJH 05/09/05'		



Housing with contact



Hood

NOTES:

1.SPECIFICATIONS

- .CURRENT RATING: 0.5A/pin Max.
- .VOLTAGE RATING: 30V(DC)
- .DIELECTRIC WITHSTANDING VOLTAGE: 100VAC 1 minute.
- .CONTACT RESISTANCE: 50mΩ Max.
- .INSULATION RESISTANCE: 100MΩ Min
- .TEMPERATURE RANGE: -20°C+70°C

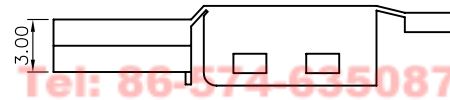
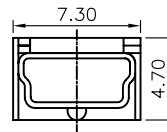
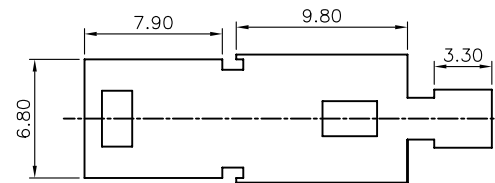
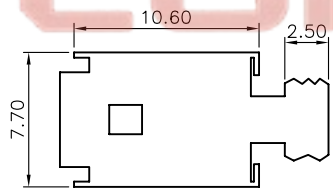
2.MATERIALS

- .HOUSING: PBT.
- .HOOD: ABS.
- .SHELL: STEEL
- .CONTACT: COPPER ALLOY

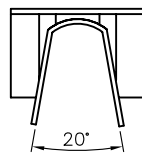
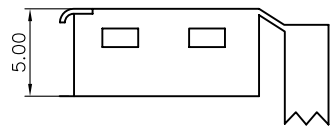
3.PRODUCT NUMBER CODE:

DS1105-01 - X X X X

- Contact plating
- 0: Selective gold flash
- C: Selective 3u" gold
- 3: Selective 30u" gold
- Shell plating
- 6: Tin
- N: Nickel
- 8: Full gold
- Color of Hood
- B: BLACK
- Color of housing
- B: BLACK
- Products series
- DS1105-01



Down shell



Upper shell

GENERAL TOLERANCE	ANGLE TOLERANCE	PROJECTION	TITLE
X. ±0.60	X. ±5°	UNITS mm	MINI USB 5PIN B TYPE MALE SOLDER
.X ±0.38	.X ±3°	SHEET SIZE A4	SERIES DS1105-01 SERIES
.XX ±0.25	.XX ±2°	<b>晨翔电子有限公司</b> <b>CONNFLY CONNFLY ELECTRONIC CO. LTD</b>	
DRAWING TYPE	CUSTOMER		
SCALE 1:1	SHEET 1 OF 1		
DRAWING NO. C-DS1105-01-XXX			

Tel: 86-574-63508787  
 Fax: 86-574-63510817

CONNFLY